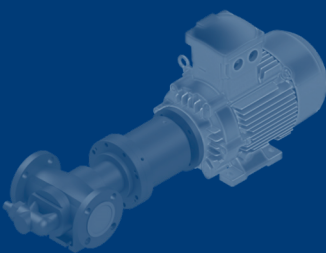
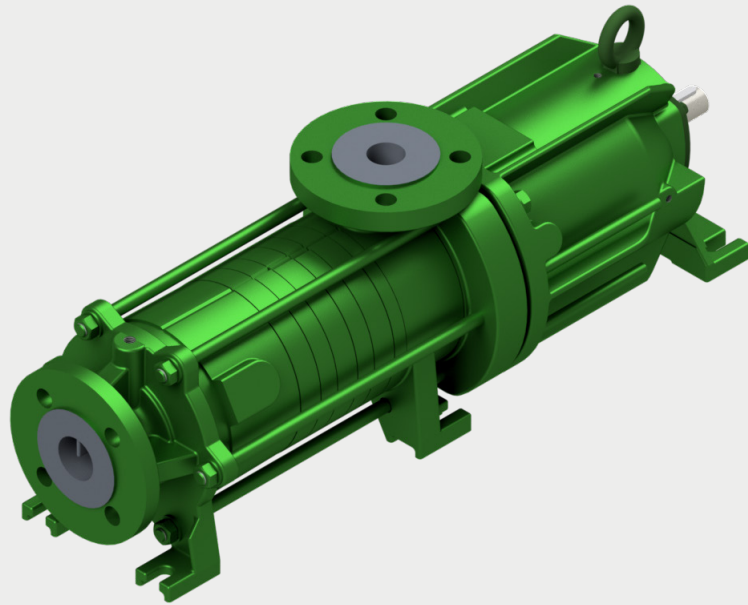
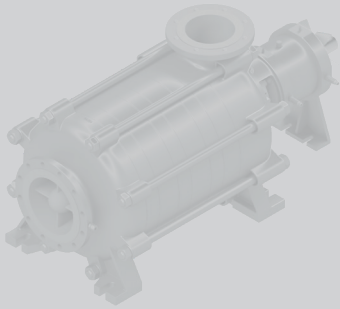


PRODUCT DATA SHEET



YOUR BENEFIT

- Self-priming
- Suited for high gas volume, NPSHr efficient design
- Pulsation-free output
- Maintenance-free operation, hermetically sealed
- Low conveying/min. flow rates possible at high heads

SIDE CHANNEL PUMP **SCM**

SIDE CHANNEL PUMP SCM

Description / Application

The type SCM is a single or multi-stage self-priming horizontal side-channel pump in hermetically sealed design with a heavy-duty magnetic coupling.

Suction and discharge flanges as well as casing screws are designed to PN40. The containment shells are customized according to the existing operating pressures. The pump is equipped with a permanent coupling, and the containment shell hermetically seals the conveying medium to the outside.

Through the axial suction flanges and the suction impeller, the SCM achieves low NPSH values.

Highly suitable for the safe, leak-free transfer of hazardous or aggressive liquids, even with significant gas content. In addition to self-priming capability, side channel pumps have the advantage of working more economically against relatively high pressures with small flow rates due to their high pressure coefficient compared to conventional centrifugal pumps.

Applications

- Oil & Gas
- Chemistry & Petrochemistry
- Offshore
- Ship technology & Marine
- Refueling equipment & Aviation
- Tank storage & Tank farms
- Renewable energy & Environmental engineering

Info SCM



SIDE CHANNEL PUMP SCM

Technical Data

Design

Pump type	Side channel pump
Stages	Single or multi-stage
Sealing	Magnetic coupling
Set-up	Horizontal
Self-priming	Yes
Bearing	Antifriction bearing, sleeve bearing***
Lubrication	Grease

Material

Spheroidal graphite iron (EN-GJS), Cast steel (GP 240 GH), Austenitic cast steel (1.4408/1.4571), Duplex (1.4517), Ni-Based (2.4686)

Technical Data

Q max*	32 m ³ /h [141 gpm]
H max*	600 m [1970 ft]
Operation pressure**	40 bar [580 psi/4 MPa]
Temperature**	180°C [360°F]
max. speed	1750 rpm

* depending on size and speed

** higher temperatures and pressures on request

*** product side

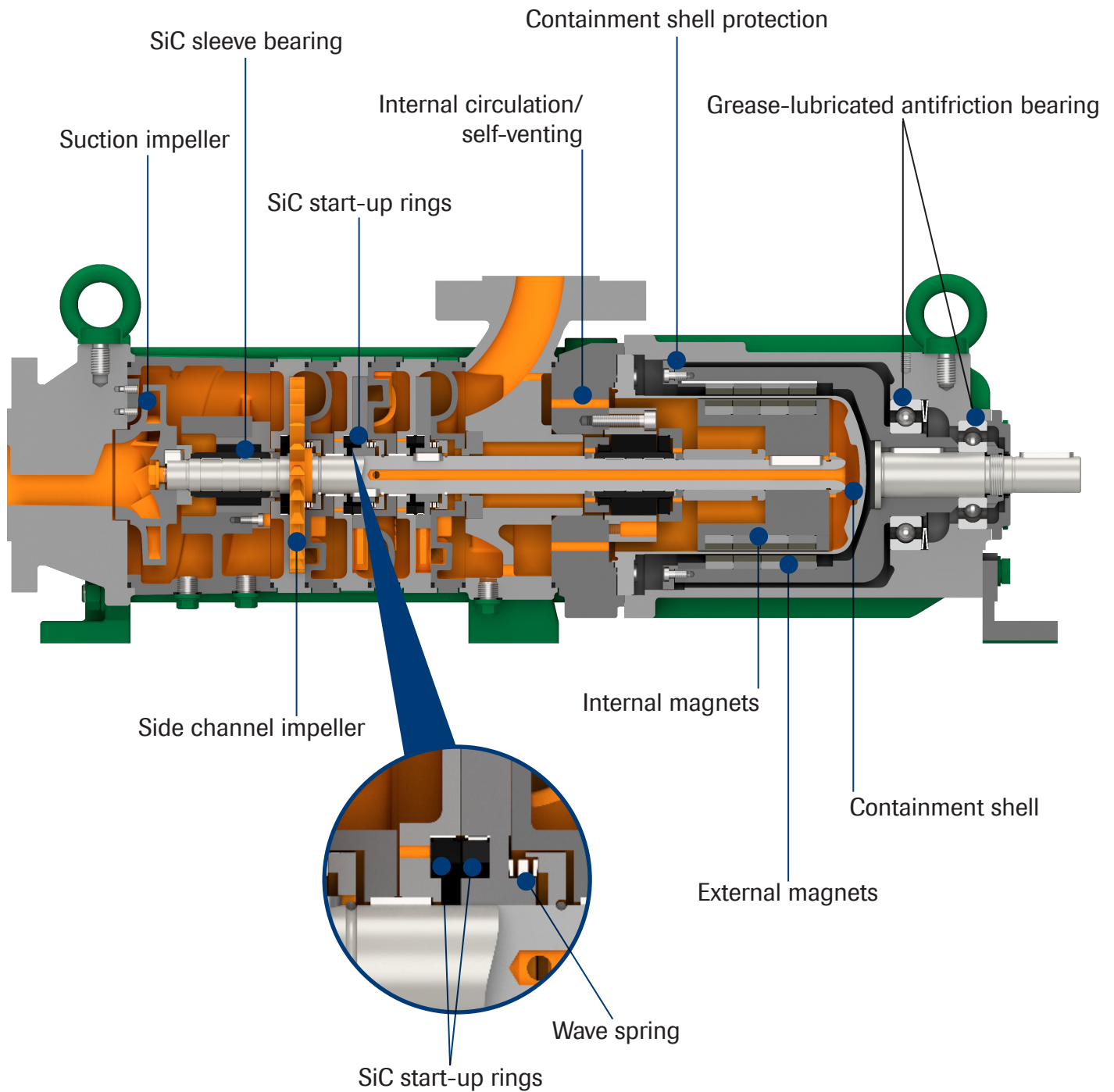
Norm

ISO 15783

Explosion protection: Category 2 / Zone 1

SIDE CHANNEL PUMP **SCM**

Sectional View



Address

Dickow Pumpen
GmbH & Co. KG
Siemensstrasse 22
D-84478 Waldkraiburg

Phone

+49 (0)8638 602-0

Internet

info@dickow.de
www.dickow.de

Homepage:

